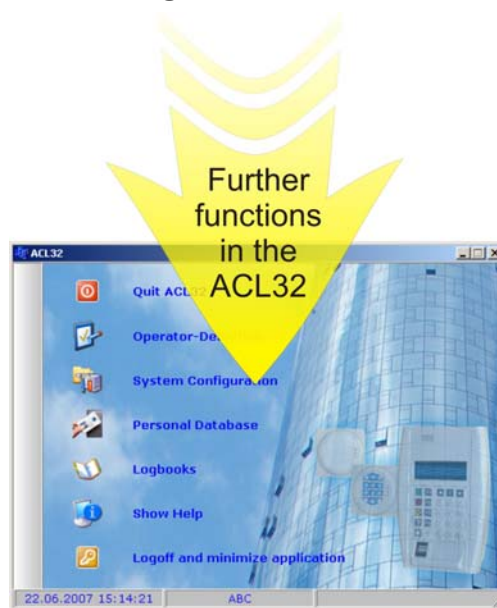


## Further functions for XMP-ACL32-000!

Dear Sirs,

As a result of your hints and suggestions the new access control system ACL32 has been extended by the following functions.



### Extended functions:

- Export function of the badge definition in Babylon
- Print function of the badge definition (HTML)
- Export of the alarm log in csv-format (Excel)
- Operator definition revised (at least 1 program operator must be defined in the system)
- Customized program call and data protection possible
- Simplified registering of identification numbers in the badge definition realized (a simple click onto the card number in the alarm log is sufficient, and the identification number is copied into the intermediate file)
- Automatic filling up of pre-defined places for pin code and badge identification number integrated
- Automatic profile entry in the badge definition (activatable)

As of now you can get more detailed information at our AUTEC customer-server.

If you have any further questions, we are always at your disposal.

Yours sincerely,

Your AUTEC - Team

Errors and changes excepted.

Date: M:\AUTEC Aktuell\2007e\doc\Akt0407e.doc