

## Access Terminal TMC2210

(Identification by PIN)

secure, manage, book

### Applications

- Access control
- Time recording
- Time and attendance
- Door management
- Parking systems
- Elevator control



XMP-TMC2210

### Functions

- The identification is realised by PIN code input, exclusively.
- connection of 8 cardreaders to the access controller **XMP-K24<sup>plus</sup>** or **XMP-K32 (Lite)**
- firmware update from Host-PC
- adjustable address via dip switch
- sabotage tamper
- easy mounting by Phoenix connectors
- signalling: 3 x LED`s, 1 x buzzer
- impact proofed housing (ABS )

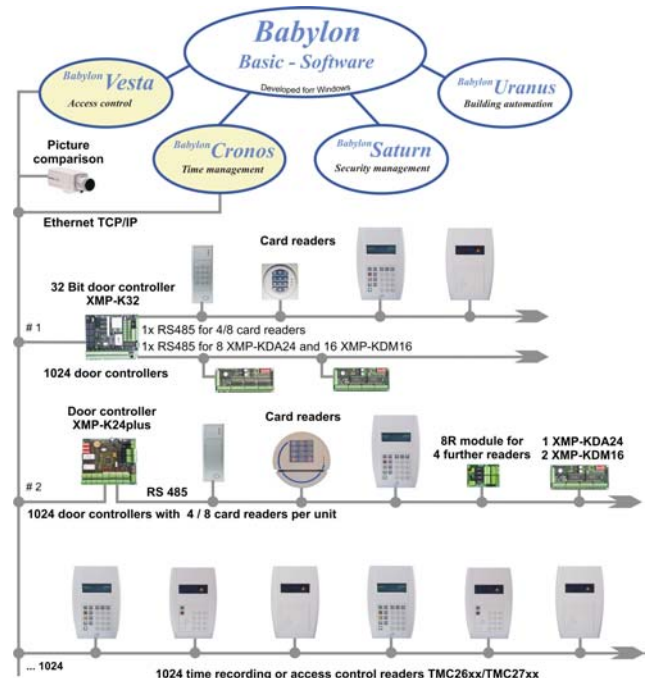
**Note:** The entered PIN corresponds to the entry „badge “of badge definition.

### Technical data

<b>Housing:</b>	ABS
<b>Color :</b>	Similar RAL9006/9007 silver
<b>Dimensions (HxLxW):</b>	50 x 136 x 25 mm
<b>Protection:</b>	IP 54
<b>Power supply:</b>	12-24 V (AC / DC)
<b>Current consumption:</b>	app.120mA at 12V DC
<b>Environmental conditons:</b>	-20°C to +70°C (operation and storage)
<b>Interface:</b>	RS 485 (2 wire)
<b>Processor:</b>	M16C 16 Bit; 16 MHz; CMOS-Design
<b>Memory:</b>	RAM 20kB Flash-Memory 256kB
<b>Accessories:</b>	Individual painting, High protection (IP65)

#### Important customer information!

Defective circuit boards must be disposed in competent manner. Old batteries and accumulators are hazardous waste. The package can be used again or can be disposed. The green filling material can be disposed as bio waste.



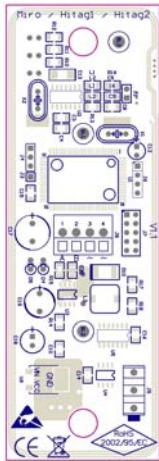
Scheme for the connection possibilities of cardreaders to BABYLON/NT

### Legend

**XMP-K24<sup>plus</sup>:** Intelligent door control unit with RS485 and 10Mbit LAN interface. Up to 8 access control terminals are connectable. The **XMP-K24<sup>plus</sup>** is equipped with 8 digital outputs and 16 digital inputs.

**XMP-K32:** Intelligent door control unit with RS485- and 10/100Mbit LAN interface. It is equipped with a 266MHz processor (embedded Linux operating system). **100.000** access profiles, **500.000** badges (extendable on **2.000.000**), **500.000** bookings.

**Order-Numbers:**  
**XMP-TMC2210 with PIN-Code**



Backside of the cardreader

4	Default OFF
5	Baudrate setting to K24/K32 OFF: 9600 (suggested); ON = 19200
6	ON = UCI-Protokoll
7	Reserved
8	ON = Bootloader activated

**Hints for parameter setting**

Into the **K32-** or **K24 Parameters** the **UCI-Protocol with the specification OMRON 5 bit format** (or see *Protocol*) can be set for the reader. Instead of a 6 digit badge number a maximum 6 digit PIN will be transmitted at the same position.

**→K32/K24 Parameters:**

(01, 02, 03, . . . . , 13, 14)

**→ Access control parameters (online) and badge structure of K24/K32 (offline)**

(08, 09, 10, 11, 12, 13, . . . ) from 6 digit to  
( , , 10, 11, 12, 13, . . . ) min. 4 digit  
. . .

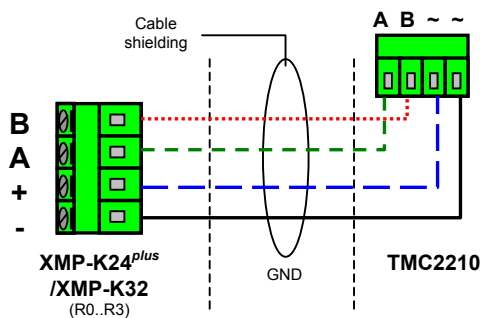
**Terminal assignment for the XMP-TMC2210**

TMC2210 (J1)	XMP-K24/K32 (R1..R4)	Description
~	+ or -	Power supply
~	+ or -	Power supply
B	B	RS485 Reader Interface
A	A	RS485 Reader Interface

**Meaning of the LEDs**

- yellow: operation state
- red: not authorized
- green: authorized
- Backside D4: communication TXD
- Backside D5: communication RXD

**Connection scheme for electrical wiring of XMP-TMC2210 readers and access controllers XMP-K24<sup>plus</sup> or XMP-K32**



**Hints on wiring:**

The card reader can be powered from access controllers internal power supply (12 VDC or 24VDC). The RS485 communication interface can be wired via bus or star structure.

**Card reader distances and cable types:**

Distance	Type of cable
Up to 200 m	2x2x0,8 (shielded)



**Meaning of the micro switches SW1**

Switch	Meaning
1-3	For binary setting of the reader addresses 0..7 (e.g. only switch 1 = ON → reader address 1, or only switch 3 = ON → reader address 4, or 1, 2 and 3 = ON → reader address 7)

**Protocol - Variants**

- UCI - Omron 5 Bit** (like magnetic stripe)  
(Hint: XMP-K24<sup>plus</sup> – firmware release 3.8 or higher needed)
- SecuCrypt® - Blowfish encryption**  
(Hint: only for XMP-K32/K32lite)

**Dimensions (mm)**

