

Access terminal HITAG®

protecting, managing, booking

Fields of application

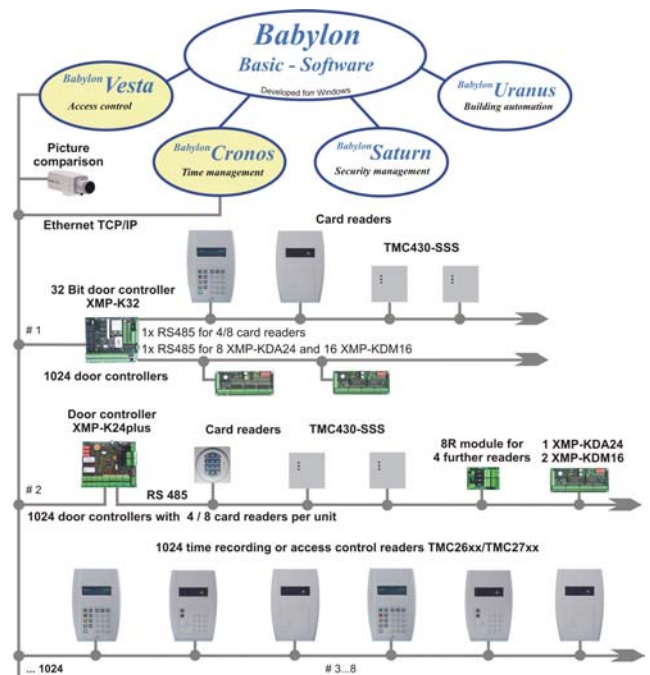
- Access control
- Time recording
- Time and attendance
- Door management
- Parking systems
- Elevator control



Functions, properties

- Contact less reading method (MIRO / HITAG-1® / HITAG-2® read only)
- Reading distance: from 3 to 5 cm
- Connection possibility of up to 8 readers at the door control unit **XMP-K24^{plus}** (UCI protocol) or **XMP-K32/K32Lite** (UCI/SecuCrypt® protocol)
- Firmware update from Host-PC via XMP-K32/K32L possible
- Power supply 12 - 24 V/DC over door-control
- Adjustable address via dip switch
- Sabotage tamper
- Signaling: 3x LED, 1x buzzer
- The reading unit is integrated into the Siedle blind module BM-611
- Possibility of installation into Siedle entry phones
- Available in original Siedle colors
- Weatherproofed (potted electronics)

XMP-TMC2430-Sx



Scheme for the connection possibilities of card readers to BABYLON/NT

Technical data

Casing:	Polycarbonate (UV resistant)
Color:	Standard Siedle colors
Dimensions (HxLxW):	99 x 99 x 22 mm
Protection type:	IP 54 (after installation)
Supply voltage:	12-24 V (AC / DC)
Current consumption:	Approx.111mA for 12V DC
Environmental conditions:	From -20°C to +70°C (operation and storage)
Interfaces:	RS 485 (2 wire)
Processor:	M16C 16 Bit; 16 MHz; CMOS-Design
Program memory:	RAM 20kB, Flash Memory 256kB

Legend

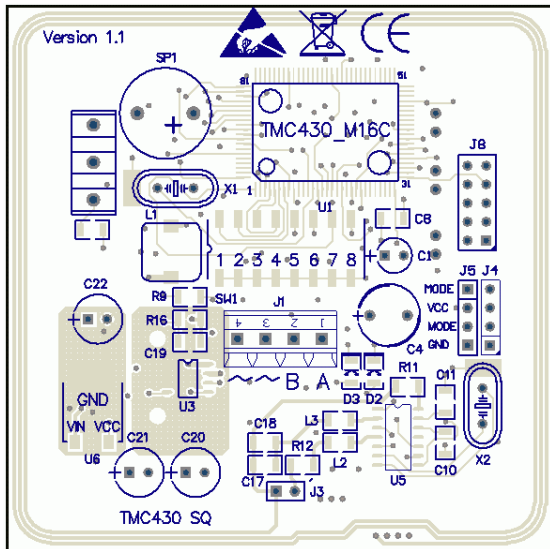
XMP-K24^{plus}: Intelligent door control unit with RS485 and 10Mbit LAN interface. Up to 8 access control terminals are connectable. The **XMP-K24^{plus}** is equipped with 8 digital outputs and 16 digital inputs.

XMP-K32: Intelligent door control unit with RS485- and 10/100Mbit LAN interface. It is equipped with a 266MHz processor (embedded Linux operating system). **100.000** access profiles, **500.000** badges (extendable on **2.000.000**), **500.000** bookings.

Order number:

- XMP-TMC2430-SM** (silver-metallic)
- XMP-TMC2430-SW** (white)
- XMP-TMC2430-ST** (titan)
- XMP-TMC2430-SB** (brown)

Important customer information!
Defective circuit boards must be disposed in competent manner. Old batteries and accumulators are hazardous waste. The package can be used again or can be disposed. The green filling material can be disposed as bio waste.

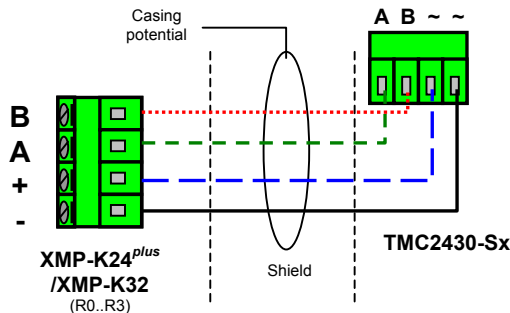


Backside of the reader

Terminal assignment for the XMP-TMC2430-Sx

TMC2430-Sx	XMP-K24/K32 (R1..R4)	Description
~	+ or -	Supply voltage
~	+ or -	Supply voltage
A	A	Reader interface
B	B	Reader interface

Scheme for the connection of the reader to the XMP-K32/ XMP-K24^{plus}



Hints for wiring:

The power supply can be provided central by the XMP-K24^{plus}/ XMP-K32 (recommendation). The connection can be realized star- or bus-like. Note the following distances:

distance up to 200 m
 cable type 2x2x0.8 (shielded)

Meaning of the micro switches SW1

Switch	Meaning
1-3	For binary setting of the reader addresses 0..7 (e.g. only switch 1 = ON → reader address 1, or only switch 3 = ON → reader address 4, or 1, 2 and 3 = ON → reader address 7)
4	Default OFF
5	Baud rate setting to K24/K32 OFF: 9600
6	ON = UCI-Protocol
7	Reserved
8	ON = Bootloader activated

Hints to the reading methods

The TMC2430/2440 reads the **serial number** of Miro-, Hitag-1 and Hitag-2 badges. The reader transmits a 14 digit badge information. Digit 14 of the read badgetype represents: 0 = Miro, 1 = Hitag-1, 2 = Hitag-2. In case of evaluating a 14 digit badge information it can be necessary to replace digit 14 by a blank in the **K24/K32 parameters**, e.g., if different reader types are in use.

Hint to the reading distance

In dependence on the environment conditions and types of data carrier the reading distance is up to 50 mm. Metal particles within the distance of 120 mm to the reader can reduce the reading distance. Recommended badge types: ISO standard

Meaning of the LED

- yellow: operation state
- red: not authorized
- green: authorized
- Backside D8: communication TXD
- Backside D9: communication RXD

Reader protocol

UCI - Omron 5 Bit (like magnetic stripe)
 (Hint: XMP-K24^{plus} – firmware release 3.8 or higher needed)
 SecuCrypt® - Blowfish encryption
 (Hint: only for XMP-K32/K32lite)

Build in dimensions in mm

