

Access terminal HITAG®

protecting, managing, booking

Fields of application

- Access control
- Time recording
- Time and attendance
- Door management
- Parking Systems
- Elevator control



XMP-TMC2430

XMP-TMC2440

Functions

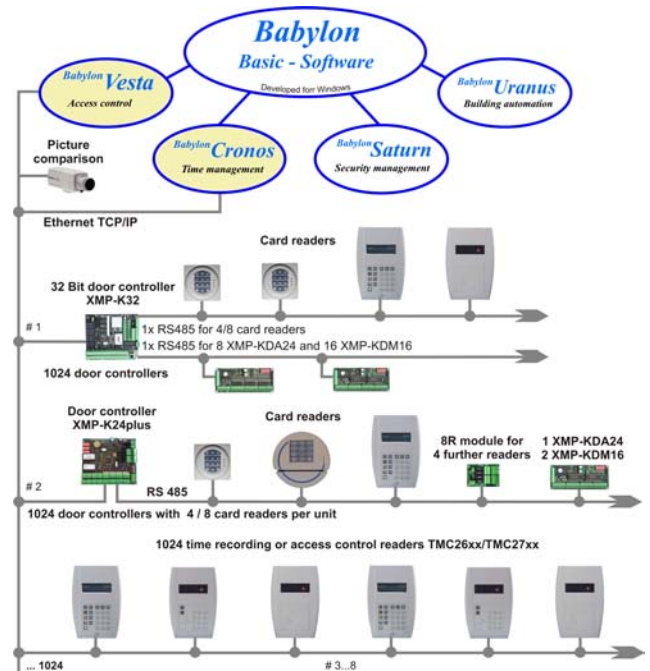
- Contact less reading method (MIRO / HITAG-1® / HITAG-2® read only)
- Reading distance: from 7 to 10 cm
- Connection possibility of up to 8 readers at the door control unit **XMP-K24^{plus}** (UCI protocol) or **XMP-K32/K32Lite** (UCI/SecuCrypt® protocol)
- Firmware update from Host-PC (K32/K32Lite)
- Power supply 12-24 V DC over door controller
- Adjustable address via dip switch
- Sabotage tamper
- Signaling: 3 x LED, 1 x buzzer
- Standard housing for installation into standard switch boxes
- Surface mounting by using up-finery-frames (accessories XMP-TMC-860)
- Easy mounting by Phoenix connectors

Technical data

Case:	Material ABS (impact proofed housing)
Color:	Silver (similar RAL9006/9007)
Dimensions (LxWxH):	80 x 80 x 25 mm
Protection type:	IP 54
Supply voltage:	12-24 V (AC / DC)
Current consumption:	app. 120 mA at 12V DC
Environmental conditions:	From -20°C to +70°C (operation and storage)
Interfaces:	RS 485 (2 wire)
Processor:	Mitsubishi M16C 16 Bit; 16 MHz; CMOS-Design
Program memory:	RAM 20kB Flash-Memory 256kB

Important customer information!

Defective circuit boards must be disposed in competent manner. Old batteries and accumulators are hazardous waste. The package can be used again or can be disposed. The green filling material can be disposed as bio waste.



Scheme for the connection possibilities of card readers to BABYLON/NT

Legend

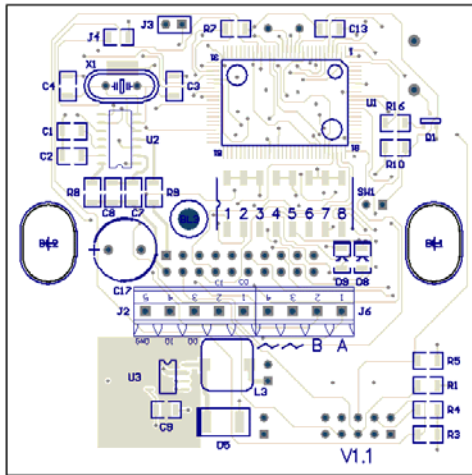
XMP-K24^{plus}: Intelligent door control unit with RS485 and 10Mbit LAN interface. Up to 8 access control terminals are connectable. The **XMP-K24^{plus}** is equipped with 8 digital outputs and 16 digital inputs.

XMP-K32: Intelligent door control unit with RS485- and 10/100Mbit LAN interface. It is equipped with a 266MHz processor (embedded Linux operating system). **100.000** access profiles, **500.000** badges (extendable on **2.000.000**), **500.000** bookings.

Order number:

XMP-TMC2430

XMP-TMC2440 with PIN code keys



Backside of the reader

digit badge information. Digit 14 of the read badge type represents: 0 = Miro, 1 = Hitag-1, 2 = Hitag-2.
In case of evaluating a 14-digit badge information it can be necessary to replace digit 14 by a blank in the **K24/K32 parameters**, e.g., if different reader types are in use.

Hint to the reading distance

In dependence on the environment conditions and types of data carrier the reading distance is between 50 and 80 mm. Metal particles within the distance of 120 mm to the reader can reduce the reading distance.
Recommended badge types: ISO standard

Meaning of the LED

- Yellow: operation state
- Red: not authorized
- Green: authorized
- Backside D8: communication TXD
- Backside D9: communication RXD

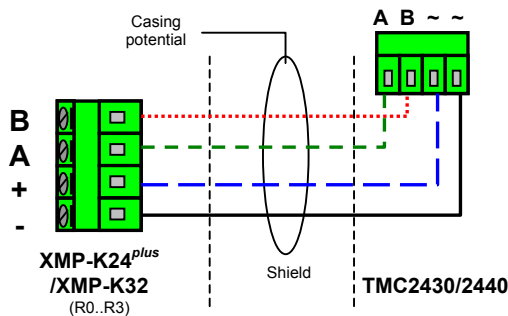
Terminal assignment for the XMP-TMC2430/2440

TMC430 TMC440 (J6)	XMP-K24 (R1..R4)	Description
~	+ or -	Supply voltage
~	+ or -	Supply voltage
A	A	Reader interface
B	B	Reader interface

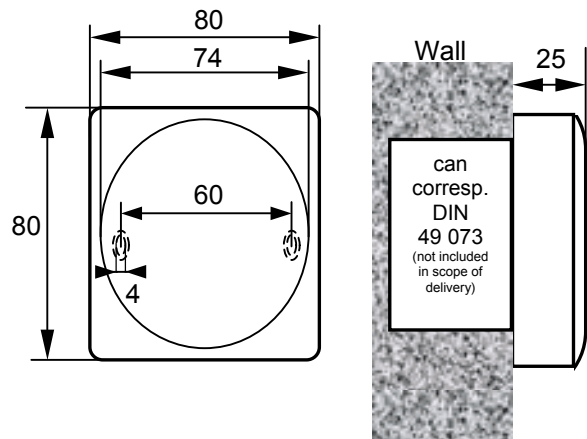
Reader protocol

UCI - Omron 5 Bit (like magnetic stripe)
(Hint: XMP-K24^{plus} – firmware release 3.8 or higher needed)
SecuCrypt® - Blowfish encryption
(Hint: only for XMP-K32/K32lite)

Dimensions (mm)



Scheme for the connection of the reader to the XMP-K32/ XMP-K24^{plus}



Hints for wiring:

The power supply can be provided central by the **XMP-K24^{plus}/ XMP-K32** (recommendation). The connection can be realized star- or bus-like. Note the following distances:

distance up to 200 m
cable type 2x2x0.8 (shielded)

Meaning of the micro switches SW1

Switch	Meaning
1-3	For binary setting of the reader addresses 0..7 (e.g. only switch 1 = ON → reader address 1, or only switch 3 = ON → reader address 4, or 1, 2 and 3 = ON → reader address 7)
4	Default OFF
5	Baud rate setting to K24/K32 OFF: 9600 (suggested); ON = 19200
6	ON = UCI-Protocol
7	Reserved
8	ON = Boot loader activated

Hints to the reading methods

The TMC2430/2440 reads the **serial number** of Miro-, Hitag-1 and Hitag-2 badges. The reader transmits a 14-



Readers with frame **XMP-TMC-860**
Dimensions of frame: 86.0 x 86.0 x 23.3mm

