

Turnstile access reader Mifare®

protecting, managing, booking

Fields of application

- Ticketing
- Regulates the flow of people
- Access control
- Time recording
- Time management
- Door management

Functions

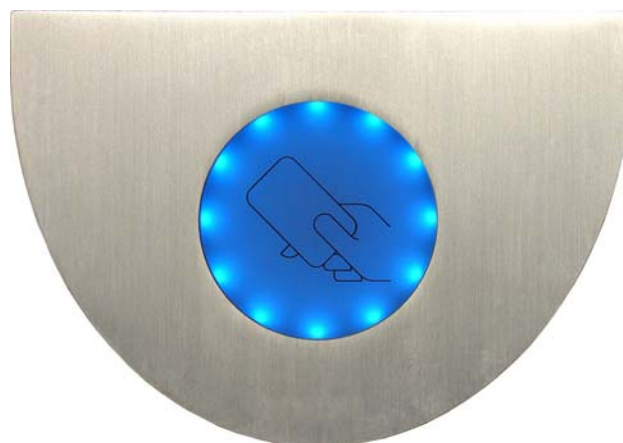
- Contact less reading method (ISO 14443A)
- Reading of serial number and sector-block information
- Reading distance: up to 6 cm
- Connection of up to 8 card readers to the door control units **K32/K32Lite** (SecuCrypt-protocol) – limited functionality in case of connection via UCI protocol at **XMP-K24^{plus}**.
- Possibility of firmware updating the card reader from operator station via **XMP-K12/K32/K32L**
- Power supply 12 - 24 V DC by door controller
- Address setting by micro dipswitches
- internal tamper switch
- Signaling elements: 3 colors each 12 LEDs (light area), 1x Buzzer
- The reader unit can be build in into any kind of turnstiles or revolving doors.

Technical Data

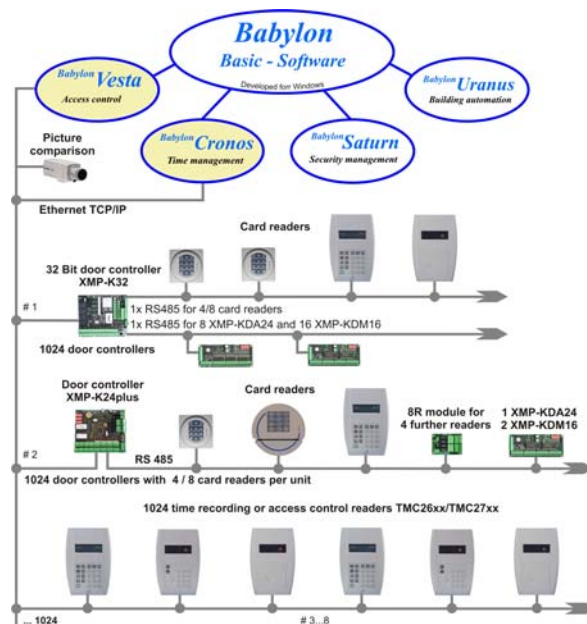
Case:	Note the turnstile instruction
Color:	Note the turnstile instruction
Dimensions (LxWxH):	Note the turnstile instruction
Dimensions of electronic (LxWxH):	Card reader: 125 x 100 x 55 mm
Protection type:	IP54 Depending of mounting IP65
Supply voltage:	12-24 V (AC / DC)
Current consumption:	Approx. 111 mA / 12V DC
Environmental conditions:	From -20°C to +70°C (operation and storage)
Interfaces:	RS 485 (2 wire)
Processor:	M16C 16 Bit; 16 MHz; CMOS-Design
Program memory:	RAM 20kB Flash-Memory 256kB

Important customer info!

Defective plates must be disposed professionally.
Batteries and accumulators are hazardous waste.
The packing can be used again must be disposed. The green filling material can be disposed as Bio waste.



XMP-TMC2450-TUR



TMC2450-TUR

(Up to 8 readers connectable at the door control unit **XMP-K32 /XMP-K32 Lite/XMP-K12**)

Legend

XMP-K24^{plus}: intelligent door control unit with RS485 interface. Up to 8 access control terminals connectable. The **XMP-K24^{plus}** is equipped with 8 digital outputs and 16 digital inputs.

XMP-K32: intelligent door control unit with RS485 and 10/100Mbit LAN interface.

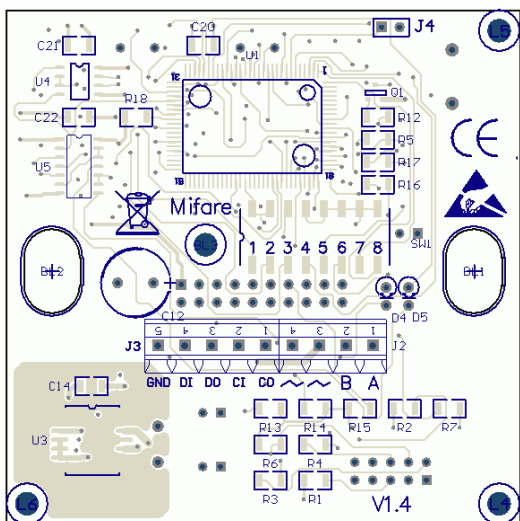
266MHz processor with Linux embedded operating system.

100.000 access levels, **500.000** master data (extendable on **2.000.000**). Up to **500.000** bookings can be stored. Up to 8 access terminals are connectable.

Order number:

XMP-TMC2450-TUR (MIFARE)

XMP-TMC2452-TUR (MIFARE DESFire)

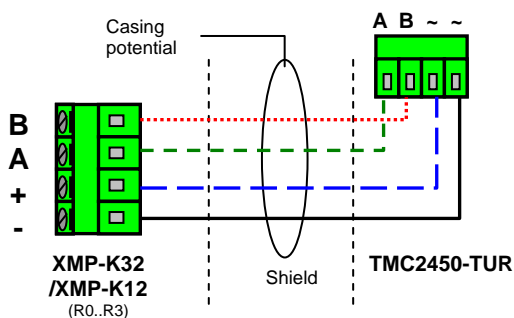


Backside of the reader

Terminal assignment for the XMP-TMC2450-TUR

TMC2450-TUR	XMP-K32/K12 (R1..R4)	Description
~	+ or -	Power supply
~	+ or -	Power supply
A	A	Reader interface
B	B	Reader interface

Scheme for the connection of the reader to the XMP-K32/XMP-K12



Hints for wiring:

The power supply can be provided centrally by the XMP-K32 / XMP-K12 (recommendation). The connection can be realized star- or bus-like. Note the following distances:

Distance Up to 200 m
cable type 2x2x0,8 (shielded)

Meaning of the micro switches SW1

Switch	Meaning
1-3	For binary setting of the reader addresses 0..7 (e.g. only switch 1 = ON → reader address 1, or only switch 3 = ON → reader address 4, or 1, 2 and 3 = ON → reader address 7)
4	Default OFF
5	Baud rate setting to K24/K32 OFF: 9600 (suggested); ON = 19200
6	ON = UCI-Protocol
7	Reserved
8	ON = Bootloader activated

Hints to the reading procedures

The TMC2450/2460 reads the unique identification number (UID) or sector-block-information of Mifare cards. The UID is transferred decimal in 14 digits. The block contents can be transmitted either in 16 digits (ASCII format) or in 32 digits (half-byte).

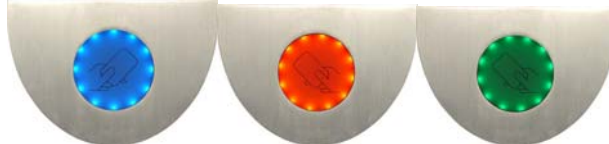
It is possible to download up to five different keys into a card reader. The reader supports MAD1 (Mifare application directory).

Hints to the reading distance

Depending on the environment conditions and types of data carrier the reading distance is between 40-60 mm. Metal particles within the distance of 90 mm in diameter to the reader can reduce the reading distance.

Meaning of the signal area

- Blue: operation state
- Red: not authorized
- Green: authorized
- Backside D8: communication TXD
- Backside D9: communication RXD



Reader protocol

- UCI - Omron 5 Bit (like magnetic stripe)
(Hint: XMP-K24^{plus} – firmware release 3.8 or higher needed)
- SecuCrypt® - Blowfish encryption
(Hint: only for XMP-K32/K32lite)

Built-in dimensions in mm



Concerning the plexiglass cover you should consider the 4 mounting holes of the board within the hidden area as well as the round cut of 90 mm in diameter.

