

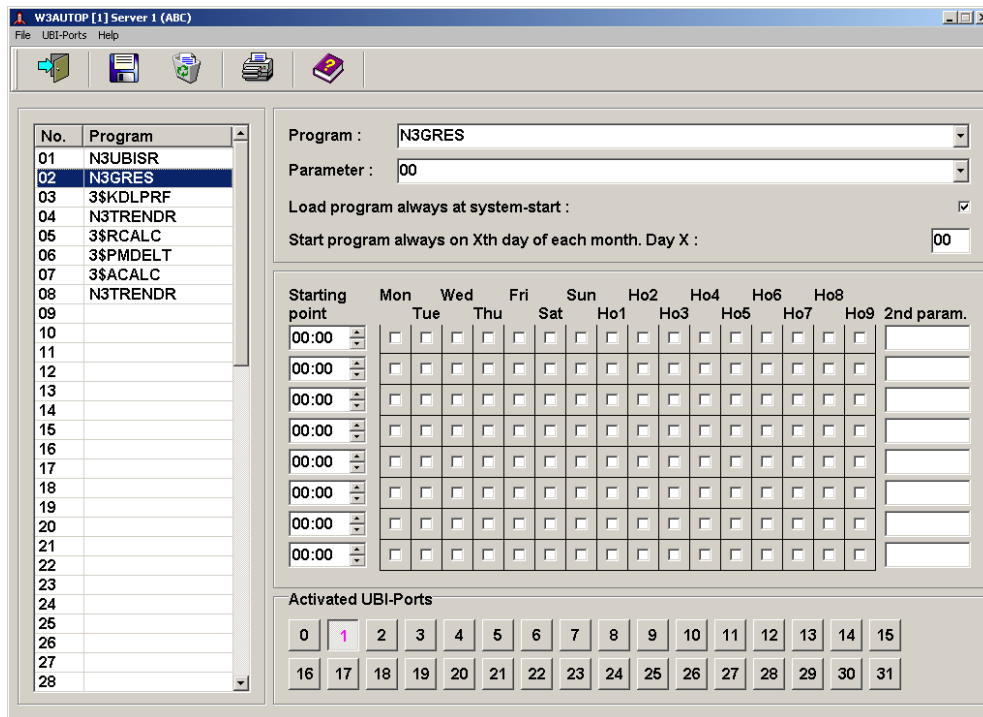


## Automatic Programs

1	General.....	1
2	Calling the program .....	1
3	Meaning of the symbols (Automatic Programs).....	2
4	Meaning of the data fields (Automatic Programs).....	2

### 1 General

The program activates the automatic start of application specific BABYLON system programs. Within this program the automatic programs are established with their corresponding starting times and, if necessary, transfer parameters.



Input window for the Automatic Programs

### 2 Calling the program

The sub program **Automatic Programs** can be reached as follows: Starting from the **Main Menu** via the **System Configuration** → calling the **Automatic Programs**.

### 3 Meaning of the symbols (Automatic Programs)



Quit program



Save settings **F2**



Delete chosen program **F4**



Print out the settings of all automatic programs **F8**



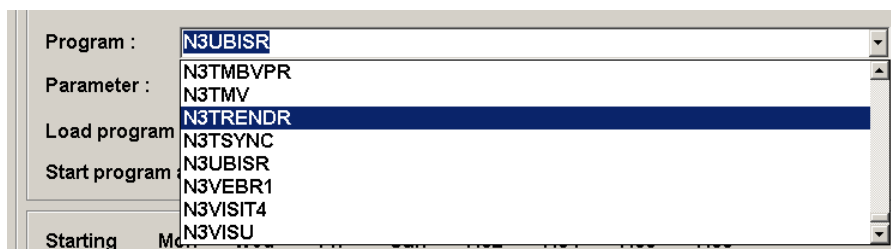
Online help **F1**

#### Hint:

It is also possible to call the functions by using the selection menu *'File'*.

### 4 Meaning of the data fields (Automatic Programs)

**Program:** Insertion of the name of the program which should be started. The program must be located in the directory EXOS386P>. It is also possible to realize the entry by selecting a program from the pull-up-window.



Choose program *automatic programs*

**Parameter:** If necessary, it is possible to submit additional parameters to the program, for example port/unit, operator station number or file options (path, name). The pull-up.window field which is allocated to this field offers a selection of free *UBI ports*.

**Load program always at system-start:** If here is a small hook „✓“ the inserted program will be always started at system start of BABYLON/NT.

**Start program always on Xth day of each month. Day X:** For example: If the program should always start at the 5th day of each month insert here a 5.

**Starting point:** Input of the time on which the program should be started automatically.  
**Mon-Son** are the weekdays from monday till sunday  
**Fe1-Fe9** are the holidays of type '1' up to '9' which are established in the *Holiday Defintion*. Insert a small hook „✓“ for all weekdays and holidays on which the program should be started.  
Up to 8 automatical starts per day are possible.  
In a corresponding temporal dependence (time, date) it is possible to insert a second additional parameter for the program in the field „2nd param.“.

**Important:**

At the end of the parameter setting is necessary to save the settings for the automatic programs with **F2!**

**Hint:**

To change the settings for an automatic program you must select it. Now it is possible to correct the currently settings and to save them afterwards (**F2**).

It is possible to check the start of an automatic program in the task display („Main Menu“ → **Service** → **System Monitor** → **Task-Display F7**.

(1/Server 1) Task-Display 22/07/03 13:45:24

No.	Pl.	Dr.	Userid	Prog 1	Prog 2	Prog 3	Prog 4	Prog 5	Prog 6
20	00	00	ABC	N3RFUNC 5½ kB	3\$MENU 25 kB				
21	01	00	ABC	N3RFUNC 5½ kB	N3IBO 667½ kB	N3SYSTEM 29 kB			
22	02	00		N3RFUNC 5½ kB	N3IBO 659½ kB				
23	03	00		N3RFUNC 5½ kB	3\$MENU 25 kB				
24	00	00		N3UBISR 224 kB					
25	00	00	ABC	N3GRES 93½ kB					
26	00	00							
27	00	00		3\$RCALC 258½ kB					

PgUp/PgDn=Next Page (Shift-)PgUp/PgDn=Next Page

Quit F1 Force Task Logoff F2

Task-Display for the program N3GRES.REX, which has been activated as an automatic program at system start.

If option 6 in the **System Definition** is set the automatic program start is also recorded in the **Event Logbook**.

Site	Date/Time	Prio	Cat	Pointname	Point-Description	Event-Text
0	22.07.2003 13:08:32	0		N3TRENDR		Program started automatically
0	22.07.2003 13:08:32	0		3\$PMDLT		Program started automatically
0	22.07.2003 13:08:32	0		3\$RCALC		Program started automatically
0	22.07.2003 13:08:32	0		N3TRENDR		Program started automatically
0	22.07.2003 13:08:32	0		N3GRES		Program started automatically
0	22.07.2003 13:08:32	0		N3UBISR		Program started automatically
0	22.07.2003 12:00:48	0		3\$ACALC		Program started automatically

Entry of the automatical program start in the Event Logbook