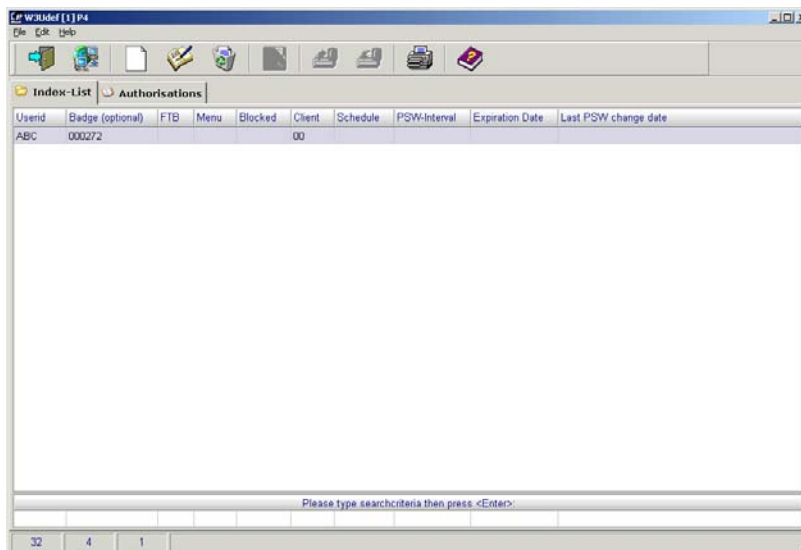


Babylon Software User-Definition



User- Definition

**May 2006
Version 1.0**

© AUTECH,
Gesellschaft für
Automationstechnik mbH
Bahnhofstr. 57 - 61 B
55234 Framersheim

Tel.: (+49) (0) 6733/9201 0
Fax: (+49) (0) 6733/9201 99
Email: vk@autec-gmbh.de
Internet: www.autec-gmbh.de

ISO9001:2000 certified

Content

Content	2
1 General notes	2
2 Version of the Program	3
3 General remarks about the User-Definition	3
4 Starting the User-Definition	3
5 Meaning of the Symbols and Datafields of the User-Definition	4
6 Sorting the Datafields	6
7 Selection of Datasets of the Index-List	7
8 Updating Database	7
9 Creating new User	7
9.1 Defining Authorizations.....	10
9.2 Defining Dialog Authorizations.....	12
9.3 Searching for certain Dialog Authorizations.....	12
9.4 Defining Categories and Supervisorcodes.....	13
9.5 Defining Accesslevels.....	14
9.6 Saving Authorizations.....	16
10 Changing Index Data of User	17
11 Deleting User	17
12 Printing and HTML-Export	18
13 Show Help	18

1 General notes

This instruction contains the necessary information to work with the *User-definition* of the **Babylon-System**. The documentation is directed to qualified personal with expert knowledge in installation und specification of control systems.

The correct operation of the hardware and the corresponding security and safety aspects require the correct use of the software.

In order to give this document a clear arrangement, not all details of the possible options of the program can be mentioned. If you should need further information, please contact us under the address, which is mentioned on the first page of this document.

2 Version of the Program

This documentation refers to the following version of the software:

W3Udef.exe	Date 20.01.2006
------------	-----------------

3 General remarks about the User-Definition

Within the *user-definition* the **BABYLON** system-administrator is able to define new users with defined authorizations. These authorizations give the user special rights and allow the user to do certain things.

For example:

- to have access to special menu programs after log-in.
- to start special system programs and to do administrative jobs.
- to change data.
- to control datasets. etc.

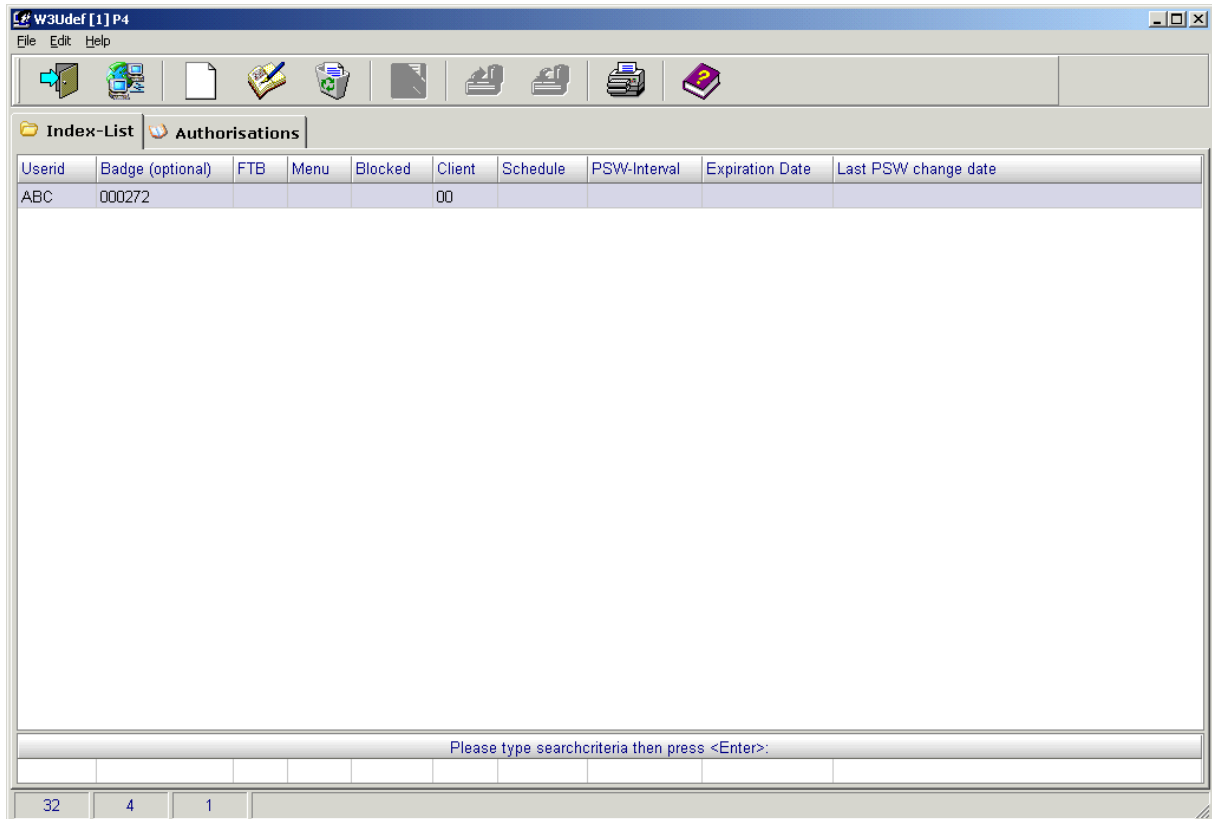
For example, a user who got assigned supervisor code „A“, is not allowed to change datapoints within the *datapoint-definition*, which have supervisor code „B“.

An input for the user identification and a password are always necessary inputs, if a new user is defined.

4 Starting the User-Definition



By clicking the button „*User Definition (IBO)*“ the program „W3Udef.exe“ starts and the mask with the list of already defined users opens.



After the system is installed the user „ABC“ with the password „1234“ is defined by default. This user has got all possible authorizations and can be used to define new users. This user should be deleted after that for reasons of security.

5 Meaning of the Symbols and Datafields of the User-Definition



Exit program



Refresh displayed data



define new user-id



Change Index-Data of the user



Delete user



Save changes, done to authorizations



Copy authorizations



Paste authorizations



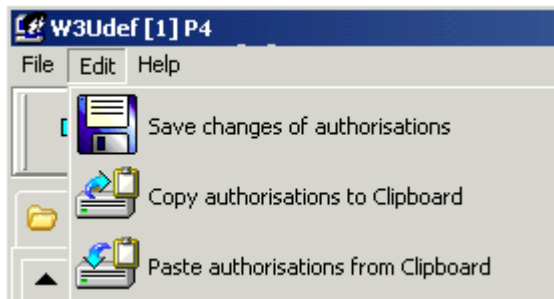
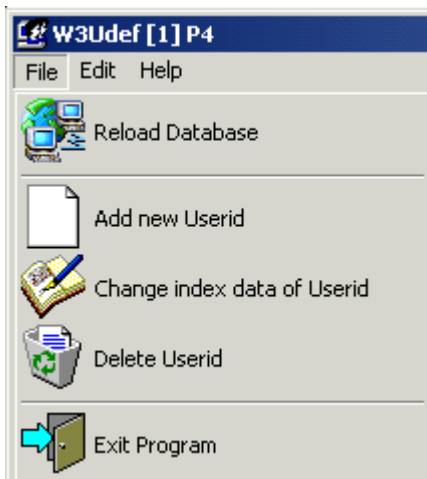
Printing and HTML-Export



Show help

Attention:

These functionalities can also be accessed over the menus „File“, „Edit“ and „Help“.



Meaning of the datafields:

User-id:	Name or user identification of the user.
Badge (optional):	If an authorization reader is assigned to an operating station, the badge number of the badge has to be identical with this number.
FTB:	Function-key authorization group (FTB-group) in case of a time correction operator station.
Menu:	Menu-version number for this user.
Blocked:	Shows, if the user is blocked, or not. If the user is blocked, the user is unable to log-in.
Client:	Not used at the moment.
Schedule:	Number of a timeschedule, which was defined within the program „W3Zplan.exe“, and is assigned to the user. Within the active time period of the time schedule, the user is able to log-in. Out of this time period a log-in is not possible. All of the setpoints, corresponding to the time schedules are run by the system, irrespective of what user is logged-in.
PSW-Interval:	Interval in days, in which the password of the user has to be changed. The user is requested to do the change by the system. If the password is not changed, before the end of the interval, for example because the user wasn't logged-in for a while, the user is able to log-in just for two times. If the password isn't changed then, the user is blocked from now on.
Expiration Date:	From this date on, the password is invalid. After that date the user is unable to log-in.
Last PSW Change-Date:	If the user has changed the password after he was requested to by the system, the date of change is shown here.

6 Sorting the Datafields

To sort all entries of a column alphanumerical in an ascended or descend manner, click on the corresponding column title field. In the example below, the user-id column was sorted.

Userid ↕	Badge (optional)	FTB	Menu	Blocked	Client	Schedule	PSW-Interval
ABC	000272				00		
Major					00		
Miller		A			00		
Smith		A			00		

7 Selection of Datasets of the Index-List

In order to search for special entries within the existing entries, it is possible, to fill the selection-fields with special criteria. The process of selection is started by pushing the <RETURN> key.

In the following example those user-ids where selected, which start with an "M".


The screenshot shows the W3Udef [1] P4 application window. The menu bar includes File, Edit, and Help. The toolbar contains various icons for file operations. The main window is divided into two tabs: 'Index-List' (selected) and 'Authorisations'. Below the tabs is a table with the following columns: Userid, Badge (optional), FTB, Menu, Blocked, Client, Schedule, PSW-Interval, and Expirati. The table contains two rows: 'Major' and 'Miller'. The 'Miller' row is highlighted. Below the table is a search bar with the text 'Please type searchcriteria then press <Enter>:' and the letter 'M' entered. At the bottom of the window, there are three small buttons with the numbers 32, 4, and 2.

Userid	Badge (optional)	FTB	Menu	Blocked	Client	Schedule	PSW-Interval	Expirati
Major					00			
Miller		A			00			

To abandon the selection and show all entries again, you have to put away the selection criterion and push again the <RETURN> key.


8 Updating Database



By clicking the button , the current stand of authorizations is uploaded from the system and displayed. This can be necessary, in order to dismiss changes, which have not been saved and to recall the former stand.

9 Creating new User



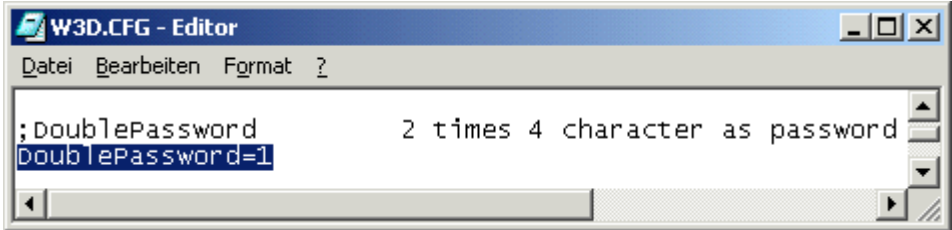
By clicking the  button, the input-mask for defining a new user can be opened.

Meaning of input-fields (standard data fields)

User-id:	Put in name or user-identificatin of the new user. This input must be done.
Badgenumber. (optional):	If an authorization reader is assigned to an operating station, the badge number of the badge has to be identical with this number, which has to be put down here.
FTB-Group (A-P):	Put down here the function-key authorization group (FTB-group) in case of a time correction operator station.
Menu-Version:	<p>Pu down here the menu version number for this user. If no input is done here, menu number 00 is used.</p> <p>In Babylon, every user can have a special designed menu. The number of the menu has to be identical with the XX within the filenames "W3meXXG.386" or "W3meXXE.386" (in directory "EXOS386D"). These menus can be designed within the Menu-definition.</p>

Menu-Entry:	Not used at the moment.
Password:	<p>Put down the password here. This input must be done.</p> <p>With the program „W3Sdef.exe“, (System-definition) within the register-card „security-rules“, additional security-rules according to the password and the log-in can be fixed.</p> <p>e.g.:</p> <ul style="list-style-type: none"> - Minimum length of password - Minimum of numeric characters - Minimum number of special characters
Repeat Password:	The password, just put down has to be confirmed, in order to control, if it is correct. If the repeated password is not identical with the password the system puts out a message. This input must be done.
User-id blocked:	The user is not able to log in, if this flag is set.
Client No. (Normal = 0):	Not used at the moment.

Meaning of input-fields (optional data fields)

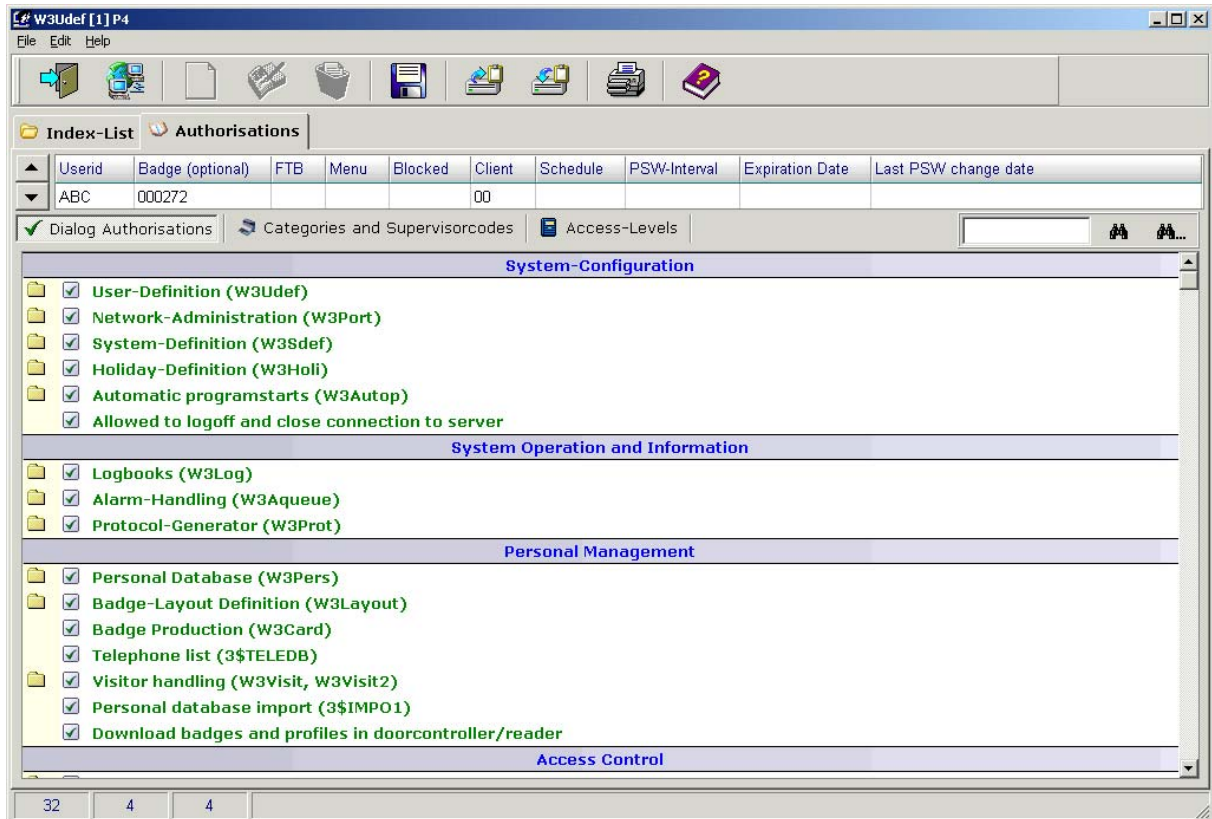
2. Password:	<p>Input of second password.</p> <p>In order to allow a user to login only by permission of another user, in the login mask, the input of a second password can be necessary. This feature has to be activated within the configurational file „W3D.cfg“ by setting entry „DoublePassword“ to „1“. With a „0“ no second password is necessary while login.</p>  <p>This feature can be activated by setting the flag in column „Activated“. If this flag isn't set the feature is inactive.</p>
Repeat 2. Password:	Not used at the moment.
Timeschedule:	Into this field, the number of a time schedule can be put down, which was defined within the program „W3Zplan.exe“. Only within the time interval, which is assigned to the time schedule, the user is able to log in. The set-points of the time schedule are run from the system, irrespective of what user is logged in.


	This feature can be activated by setting the flag in column „ Activated “. If this flag isn't set the feature is inactive.
Password change interval (days):	In this field, the time interval in days can be put down within the password has to be changed. The user will be requested to change the password by the system. Therefor the program „W3NEWPSW.exe“ is started. This feature can be activated by setting the flag in column „ Activated “. If this flag isn't set the feature is inactive.
Expiration date / time:	Here the date can be put down from where on the user will be blocked. After this date the user cannot log in anymore. This feature can be activated by setting the flag in column „ Activated “. If this flag isn't set the feature is inactive.

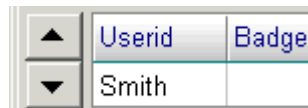
9.1 Defining Authorizations

One way for to define dialog authorizations, categories, supervisor codes and access-levels for a new defined user is to use a user, who already has got similar authorizations. After the installation of **BABYLON** the user „ABC“ is the only possible user of the system. The authorizations of the user „ABC“ are very easy to copy and to paste into the new user in the following way:

Marking user „ABC“ and clicking the register-card „*Authorizations*“. Now the mask with the overview of „*Dialog Authorizations*“, the „*Categories and supervisor codes*“ and the „*access-levels*“ of the user opens.



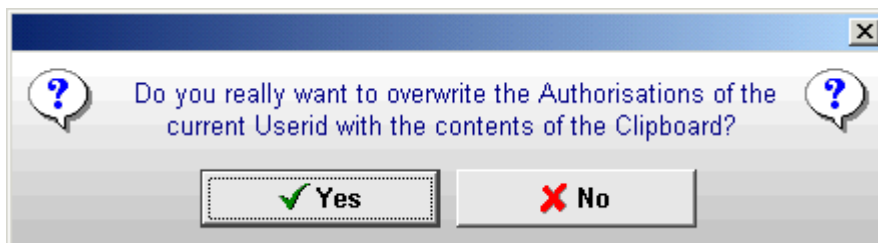
By clicking the button „Copy authorizations to clipboard“  the authorizations of user „ABC“ are copied to the clipboard.



After that e.g. using the up/down buttons mark the new user (in this case „Smith“) and by using the button „Paste authorizations from clipboard“



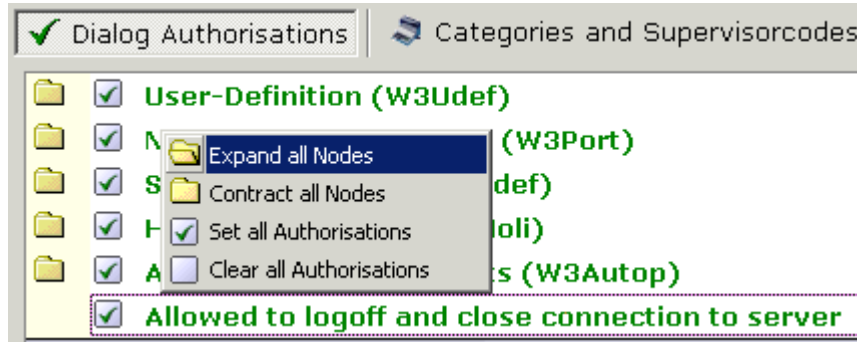
paste the authorizations into the new user. In the following dialog, this action either can be stopped or continued.



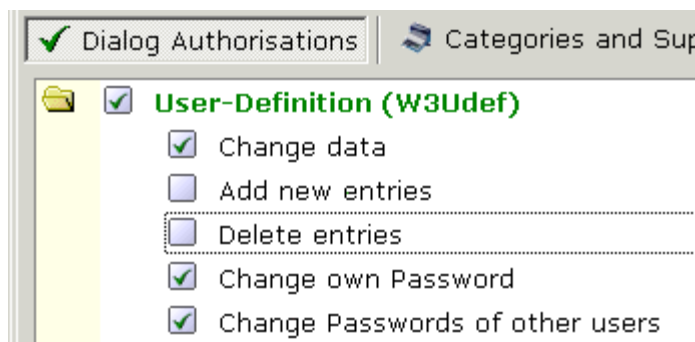
Now the authorizations of the user „Smith“ have to be adjusted as demanded by the administrator.

9.2 Defining Dialog Authorizations

Clicking on to the dialog authorizations with the right mouse-button is opening a pop-up menu, which allows to realize the selected action for all items of the dialog authorizations (e.g. Set all authorizations).



By clicking the directory symbols with the left mouse-button you can expand and contract all nodes of the tree-structure. Clicking individual dialog authorizations with the left mouse button activates or deactivates the clicked dialog authorization.



A tick within a field means, that the corresponding dialog authorization is activated for this user in the system. No tick means, that the dialog authorization is not activated.

9.3 Searching for certain Dialog Authorizations

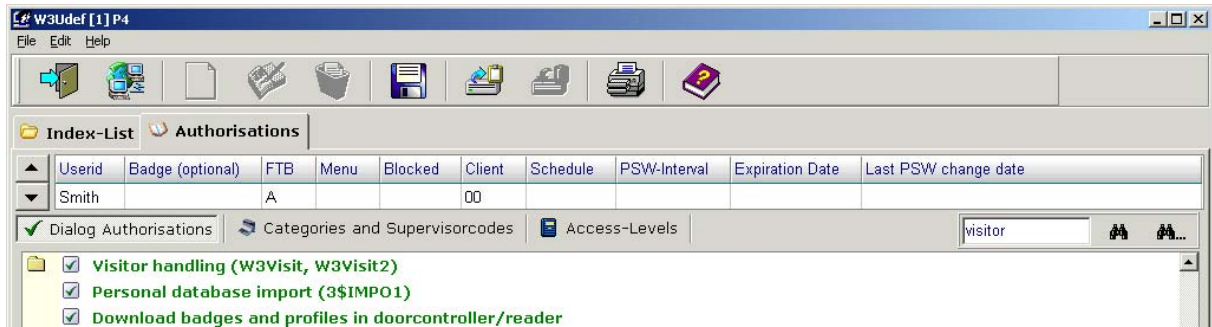
In order to search for special dialog authorizations, it is possible to put in search strings.

Example:

If you want to find a dialog authorization, which could be important in the context of the administration of visitors, you could put in the term „visitor“ into the input field,



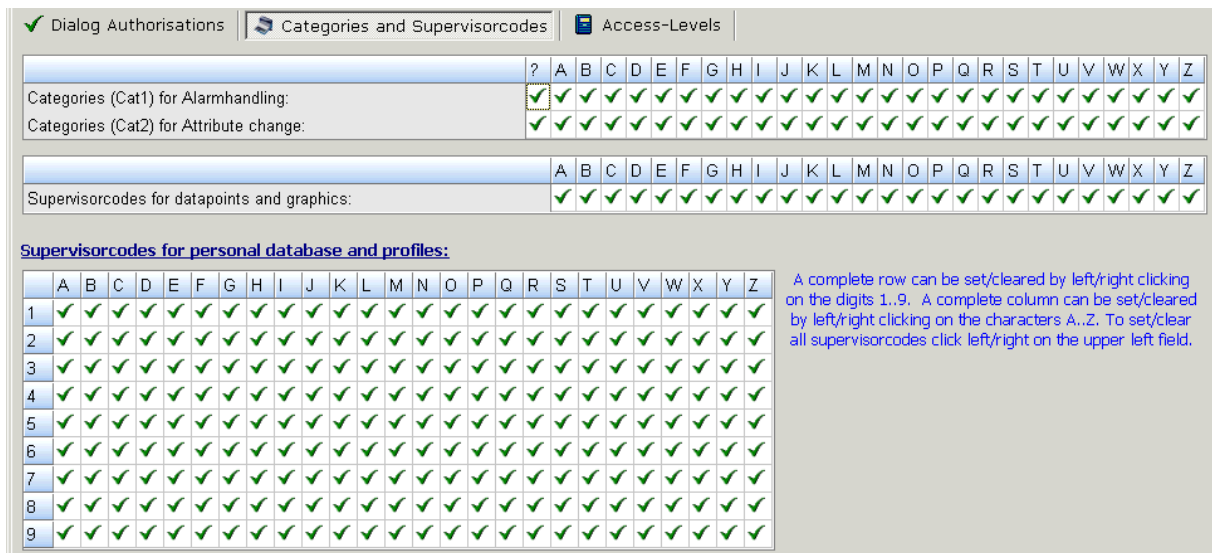
and then click the left pair of binoculars. The focus now will jump to the entry of the list where the term “visitor” first occurs.



You can search for the next entry by clicking the right binoculars.

9.4 Defining Categories and Supervisorcodes

There are several possibilities to change categories and supervisor codes.



In order to activate all categories, you can click the blue field in the left upper corner using the left mouse button. In order to deactivate all categories click the same field with the right mouse button. Deactivating and activating single categories, is possible by clicking the corresponding fields with the left mouse button.

The same principles take place when you are working with „Supervisorcodes for datapoints and graphics“.

The same with „Supervisorcodes for peronal database and profiles“. But additionally the ticks can be set and reset for whole rows and columns. Clicking onto a figure (1-9) by the left mouse button sets all ticks in this row. Clicking with the right mouse button removes all of these ticks. The same principles are valid for the columns, if the letters A-Z are used.

9.5 Defining Accesslevels

With the settings of the authorizations of access-levels it can be defined, which access-levels can be administrated by the user. This means, which access-levels this user for example can assign a to person respectively to the badge of this person. After a new installation of the system, normally a user can administrate 200 access-levels. In order to be able to administrate 300 or more access-levels except of by default activated database No.22 (\$\$PROF1) database No. 23 (\$\$PROF1M) has to be activated, too.

The corresponding menu is divided into two parts.

Accesslevel-Overview										Selected group of 100 Accesslevels											
	000	100	200	300	400	500	600	700	800	900		0	1	2	3	4	5	6	7	8	9
0000											0000										
1000											0010										
2000											0020										
3000											0030										
4000											0040										
5000											0050										
6000											0060										
7000											0070										
8000											0080										
9000											0090										

In the left part, the authorizations can be selected in groups of 100 authorizations. In the right part the individual access-levels of the in the left part selected group can be worked. By clicking the blue field located in the left upper edge by the left mouse button, all groups of 100 access-levels each can be activated. By using the right mouse button, all of them will be deactivated. The groups also can be activated or deactivated row by row. Just click the blue fields (0000 - 9000) at the very left by using the left or the right mouse button. In the same way the access-levels of the in the right part (*Selected group of 100 access-levels*) selected 100-group can be set or rest all together or row by row. Additionally every single access-level can be activated or deactivated by using left mouse button.

Example:

In this example all access-levels of the first 100s-group are activated. You can see it, because of the black filled redtangular of the 100s-group (0000 x 000), and because of the ticks within the detail view.

Accesslevel-Overview							
	000	100	200	300	400	500	600
0000	■	■					
1000							

Selected group of 100 Accesslevels

	0	1	2	3	4	5	6	7	8	9
0000	✓	✓	✓	✓	✓	✓	✓	✓	✓	✓
0010	✓	✓	✓	✓	✓	✓	✓	✓	✓	✓
0020	✓	✓	✓	✓	✓	✓	✓	✓	✓	✓
0030	✓	✓	✓	✓	✓	✓	✓	✓	✓	✓
0040	✓	✓	✓	✓	✓	✓	✓	✓	✓	✓
0050	✓	✓	✓	✓	✓	✓	✓	✓	✓	✓
0060	✓	✓	✓	✓	✓	✓	✓	✓	✓	✓
0070	✓	✓	✓	✓	✓	✓	✓	✓	✓	✓
0080	✓	✓	✓	✓	✓	✓	✓	✓	✓	✓
0090	✓	✓	✓	✓	✓	✓	✓	✓	✓	✓

In the second 100s-group (0000 x 100) access-levels 100 – 149 and access-level 199 got activated. You can see this again within the Level-overview und in detail within the overview “selected group of 100 access-levels”.

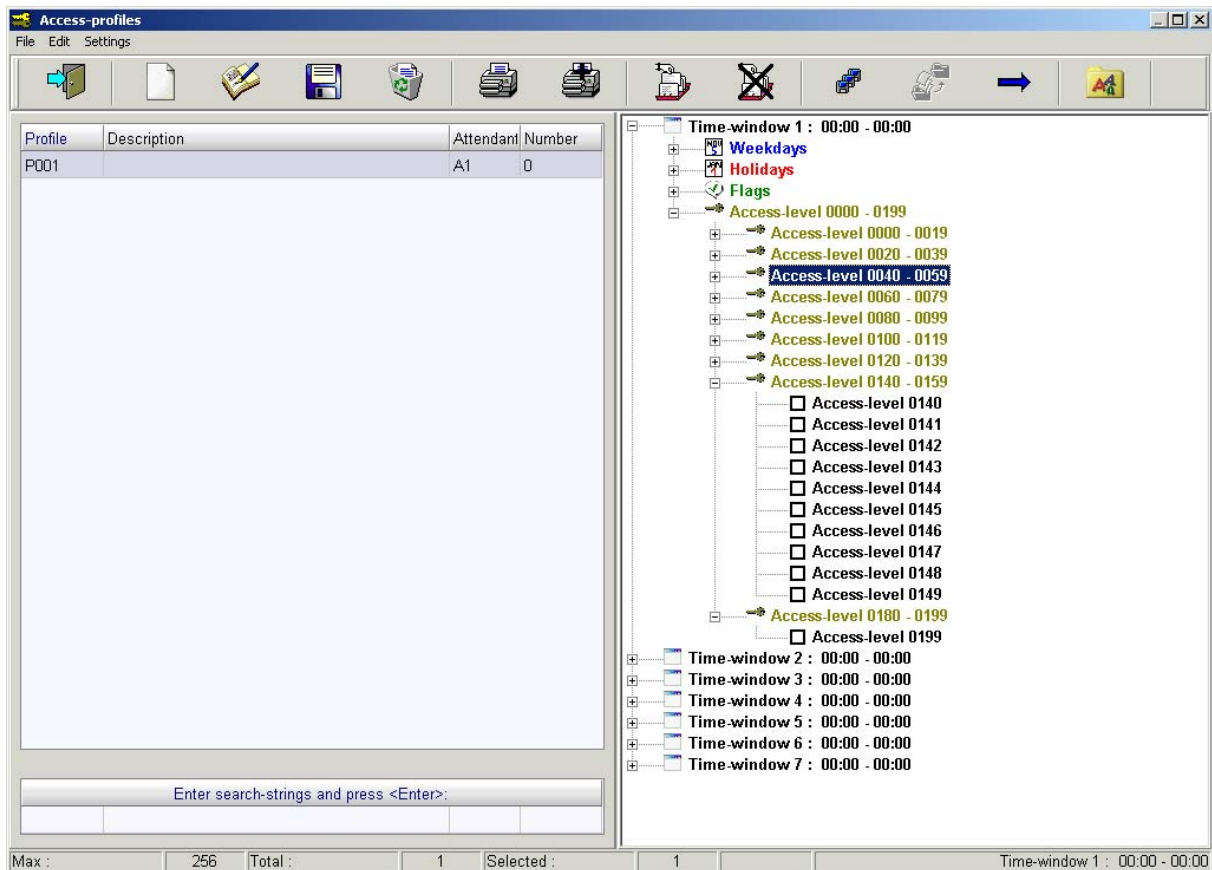
Accesslevel-Overview

	000	100	200	300	400	500	600
0000							
1000							


Selected group of 100 Accesslevels

	0	1	2	3	4	5	6	7	8	9
0100	✓	✓	✓	✓	✓	✓	✓	✓	✓	✓
0110	✓	✓	✓	✓	✓	✓	✓	✓	✓	✓
0120	✓	✓	✓	✓	✓	✓	✓	✓	✓	✓
0130	✓	✓	✓	✓	✓	✓	✓	✓	✓	✓
0140	✓	✓	✓	✓	✓	✓	✓	✓	✓	✓
0150										
0160										
0170										
0180										
0190										✓

These settings have effects, if the user wants to define profiles for personnel within the program (W3PERS).



9.6 Saving Authorizations

In order to activate the changes, which were done to the authorizations, it is necessary to save the stand by clicking the  button and to restart the system.


Normally a user who is defining a new user is allowed to activate all authorizations for the new user, even those which he hasn't got. If this shall not be possible, within the [system-definition](#) flag 13 has to be set. In this case, every user can only set those authorizations, which he has got. The next figure shows the necessary setting.



Attention:

Basically, it is possible every time to change the authorizations of a user, not only when defining one.

10 Changing Index Data of User

By clicking the  button, you can change the Index-data of a user. On principle, the menu is identical with the menu for defining a new user (Abschnitt 9).


Standard Datafields	
Userid:	Smith
Badgenumber (optional):	
FTB-Group (A-P):	A
Menu-Version:	
Menu-Entry:	
Password:	
Repeat Password:	
Userid blocked:	<input type="checkbox"/>
Client No. (normal=0):	00

Optional Datafields	Activated
2.Password:	<input type="checkbox"/>
Repeat 2.Password:	
Timeschedule:	<input type="checkbox"/>
Password change interval (days):	<input type="checkbox"/>
Expiration date / time:	<input type="checkbox"/>

01.01.2000 00:00

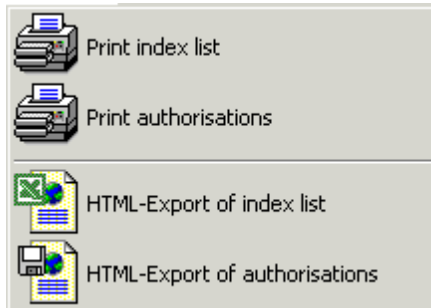
But in this menu it is not possible to change the user-id.

11 Deleting User

Within the mask of index-data, it is possible to delete a user by clicking the  button. Therefore you have to click onto the desired user-id and to click the delete-button. The user will be removed from the list.

12 Printing and HTML-Export


Over the button  a new menu opens,

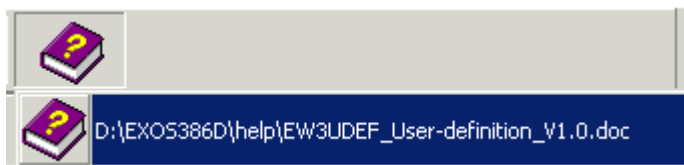


where it can be selected, if the index-list or the list of the authorizations shall be printed out. By selecting one of these opportunities the Windows printer-menu opens to select the printing options.

Additionally the Index-List and the list of the authorizations can be saved as HTML-documents.

13 Show Help

By clicking the  button the help-file opens. This file is located in the directory „exos386d\help“ (the corresponding settings are made in the configuration file „W3UDEF.CFG“).



AUTEC Gesellschaft für Automationstechnik mbH
Bahnhofstraße 57-61b
55232 Framersheim
Tel.: +49 (0)6733-9201-0
Fax: +49 (0)6733-9201-99
Email: vk@autec-gmbh.de
Internet: www.autec-gmhb.de